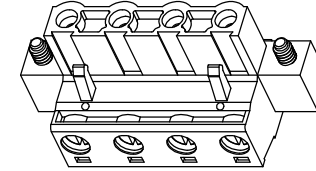
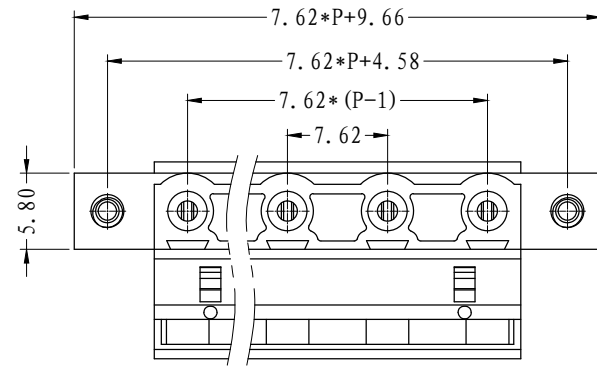


| REVISION RECORD | | | |
|-----------------|---------|------|------|
| REV. | CONTENT | MOD. | DATE |
| △ | 初版发行 | | |

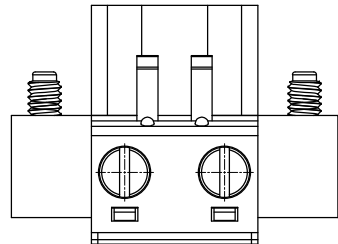


NOTES:

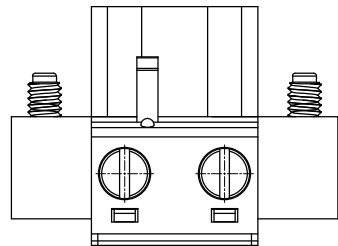
1. Voltage Rating: 400V, Current Rating: 15A
2. PITCH: 7.62mm
3. Insulation Withstands Voltage: AC2500V/min
4. Using Temperature Range:-40° C - +105° C
5. Suitable Electric Wire: 28-12AWG
6. Screw Torque Value: 0.5N.m

技术要求:

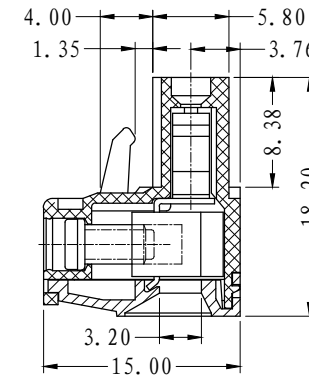
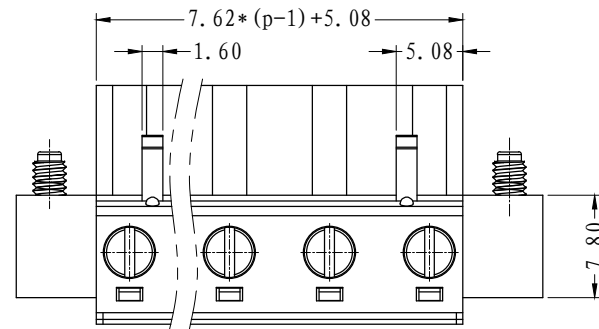
1. 额定电压: 400V, 额定电流: 15A
2. 间距: 7.62mm
3. 耐电压值: AC 2500V/min
4. 使用条件: -40° - +105°
5. 适用线规: 28-12AWG
6. 螺丝扭力: 0.5N.m



2P-双卡扣




2P-单卡扣



| | | | | | |
|------|--------------|--------------|------------|----------|--------------|
| 6. | LC1-耳朵螺丝 | SPOYA255301V | 2 | 碳钢 | 三价铬钝化彩锌 |
| 5. | LC1-5.08-夹子 | 1001B0001AV | P | 磷青铜 | 镀镍 |
| 4. | LC1-5.08-铜方块 | F1A0BLC5083V | P | 黄铜 | 镀镍 |
| 3. | LC1-5.08-螺丝 | SPOYA305301V | P | 碳钢 | 三价铬钝化彩锌 |
| 2. | LC1-7.62-盖子 | 1007C0YXXAV | 1 | PA66-V0 | |
| 1. | LC1-7.62-本体 | 1007M0YXXAV | 1 | PA66-V0 | |
| NO. | NAME OF PART | NO. OF PART | Q'TY | MATERIAL | NOTES |
| DES. | CMZ | DATE | 2024/08/03 | UNITS | MM |
| CHK. | | DATE | | SIZE | A4 |
| APP. | | DATE | | SCALE | 1:1 |
| | | | | DWG NO. | SP-2-1007001 |
| | | | | REV: | V0 |

| | pitch dimension | | | Nominal dimension | | | | | — □ ○ |
|----------------|-----------------|--------|---------|-------------------|---------|---------|----------|----------|-------------|
| | over 0 | over 6 | over 10 | over 0 | over 30 | over 60 | over 100 | over 150 | |
| variable range | to 6 | to 10 | to 24 | to 30 | to 60 | to 100 | to 150 | | |
| Tolerance | ±0.1 | ±0.15 | ±0.25 | ±0.2 | ±0.3 | ±0.5 | ±0.7 | ±1.0 | 0.05/10 |

 上海有乐电气有限公司
Shanghai YouLe Electric Co., LTD

TITLE LC1M-7.62-XXP-1Y-00A
LC1M-7.62-成品